



 **ECORASTER**®

Product Overview

Quality Permeable Ground
Reinforcement

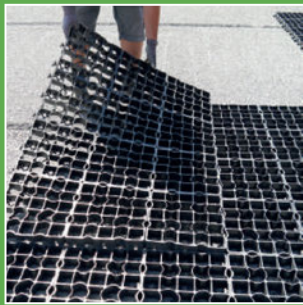
Bloxx | E40 | E50

ECORASTER® E40 | E50

High quality permeable ground reinforcement.
E40 Light to Medium-Duty and E50 Heavy-Duty.



Easy to install



STEP 1. LAY



STEP 2. CUT



STEP 3. FILL



STEP 4. IT'S DONE!

20 YEAR
warranty
ECORASTER

Quality Permeable Ground Reinforcement

Your benefits

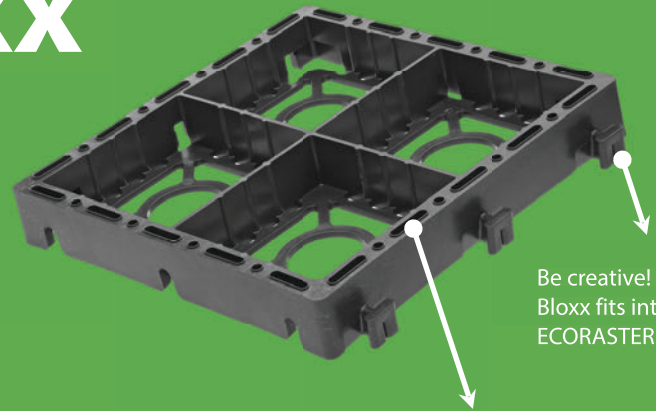
- Easy and quick installation (up to 100m² | 1,076 ft²/h per person)
- High resilience (up to 800 t/m²)
- Low maintenance
- Installation without heavy construction equipment
- No edging needed
- Permeable ground reinforcement
- Low transport and handling costs
- Highly versatile and durable
- Weatherproof and unbreakable
- Safety interlocking, 36 notches per m²
- UV-resistant and frost proof
- Drivable green area
- 20-year warranty
- German design



Type	Dimensions	Material	Wall thickness	Load	Solubility	Compressive Strength	Weight per piece	Weight per m ² 10.76 ft ²
E50 Heavy Duty	330 x 330 x 50mm 12.99 x 12.99 x 1.97"	100% recycled Polyethylene (LDPE)	5mm 0.1968"	Up to 800 t/m ² (Depending on the fill type)	Resistant to acids, alkalis, alcohol, oil and petrol (de-icing salt, ammonia, acid rain, etc.)	Up to 20t point axle load (DIN 1072)	1,06 kg . 2.34lbs	9,55kg . 21.05lbs
E40 Light to Medium-Duty	330 x 330 x 40mm 12.99 x 12.99 x 1.57"		3,6mm 0.14"				1,58 kg . 1.27lbs	5,22kg . 11.50lbs

ECORASTER® Bloxx

Paved surface with easy installation
Save money, time and maintenance



Be creative! ECORASTER® Bloxx fits into the ECORASTER system.

Thermal expansion is compensated by the expansion elements

Easy to install



Unpack, snap together, and drop the blocks in.
No need to tuck point the joints!

Bloxx elements connect together in seconds!

Bloxx Paver Elements, replaceable without loosening the cluster (e.g. exchange dirty paver)

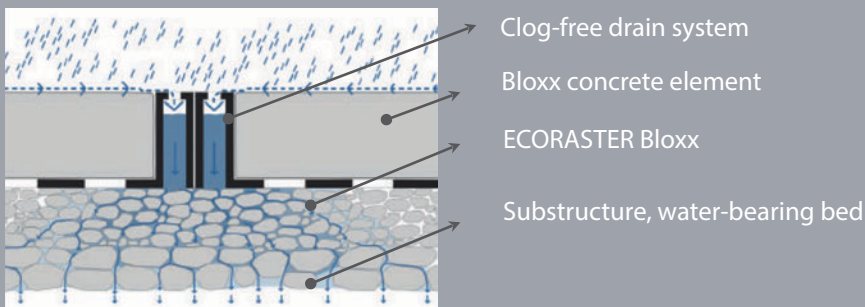


Quality Permeable Ground Reinforcement

Your benefits

- Safety locking system
- High infiltration rate
- Quick installation
- Low maintenance
- Fully accessible: unique, safety interlocking, NO bumps, NO trip hazards
- Color combinations
- Clogging? Not possible!

How it works



Type	Dimensions	Material	Paver colors	Solubility	Compressive Strength	Weight per m2 10.76 ft2
Bloxx	330 x 330 x 50mm . 12.99 x 12.99 x 1.97"	100% recycled Polyethylene (LDPE)	red, white, dark grey and light grey	Resistant to acids, alkalis, alcohol, oil and petrol (de-icing salt, ammonia, acid rain, etc.)	Up to 20t point axle load (DIN 1072)	Approx. 85 kg 187.39 lbs (incl. pavers)

Paver accessories

Build better projects

ECORASTER® manufactures a series of paver accessories to support your next paving, landscaping, or hardscaping project. All are designed to seamlessly integrate with the ECORASTER® permeable grid systems.



Parking markers

The ECORASTER® parking marker sits flush with the upper edge of the grid, making it suitable for snowy regions, and is compatible with E50 and E40 models. Three colours available: White, Yellow, Blue.



Curve element

Thanks to the curved element, you can easily and safely install E50, E40, and Bloxx in curved sections.



Universal hinge





The universal hinge makes it possible to install on embankments and sloping surfaces and is specifically designed for the ECORASTER® system.

We are Proudly Certified by



Specifications

Sustainable and cost-saving

ECORASTER® Application		Green/ Microgreen	Mineral	Bloxx
		Vegetated	Gravel filled	Paved
Load	 Roads and paths used only for pedestrians and bicycles may use this	E40	E40	✓
	 Paths, walkways and similar applications, as well as car parking	E40	E40	✓
	 Roads, road shoulders and parking lots used for all types of vehicles	E50	E50*	✓
	 Areas used with high point axle loading e.g. warehousing (forklifts and trucks), truck parking lots, bus parking, helicopter landing pads	---	E50*	✓
Installed and unfilled, the ECORASTER® system can be driven on with heavy wheeled vehicles (EN 124/D400 except Bloxx).				

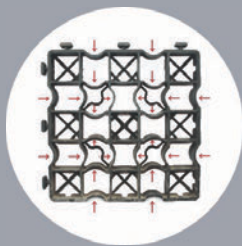
Certificates and approvals

- UV-resistant, certified DIN EN 60068-2-5
- Point axle loading up to 20 t/m², DIN 1072:1985
- Heavy-duty, tried and tested DIN EN 124:2011
- Environmentally safe, tested OECD 202:2004
- Factory warranty: 20-years from purchase date (private use)
- NATO certified E50 - MOD / 9330-99-858-1406
- TÜV CERT
- TÜV Nord "Made in Germany"



Accessories

PURUS offer accessories for ECORASTER® ground reinforcement system, including hinge and curve adaptors as well as parking markers.



Safety interlocking system

Effective safety snap connections are quick and easy to install.



Deploy without expansion joints

Not affected by temperature variations due to the integral expansion elements. Installed and unfilled, the ECORASTER® system can be driven on with heavy wheeled vehicles (class D 400, excl. Bloxx)

Developing sustainable solutions for a permeable ground reinforcement





 **ECORASTER**[®]



German engineering - installed worldwide.
Questions? Please give us a call:

1-800-495-5517

801 Tremaine Ave
Listowel ON, N4W 3G9
Canada
info@ecorastergrid.com

ecorastergrid.com